

DEVELOPMENT PLAN

FOR

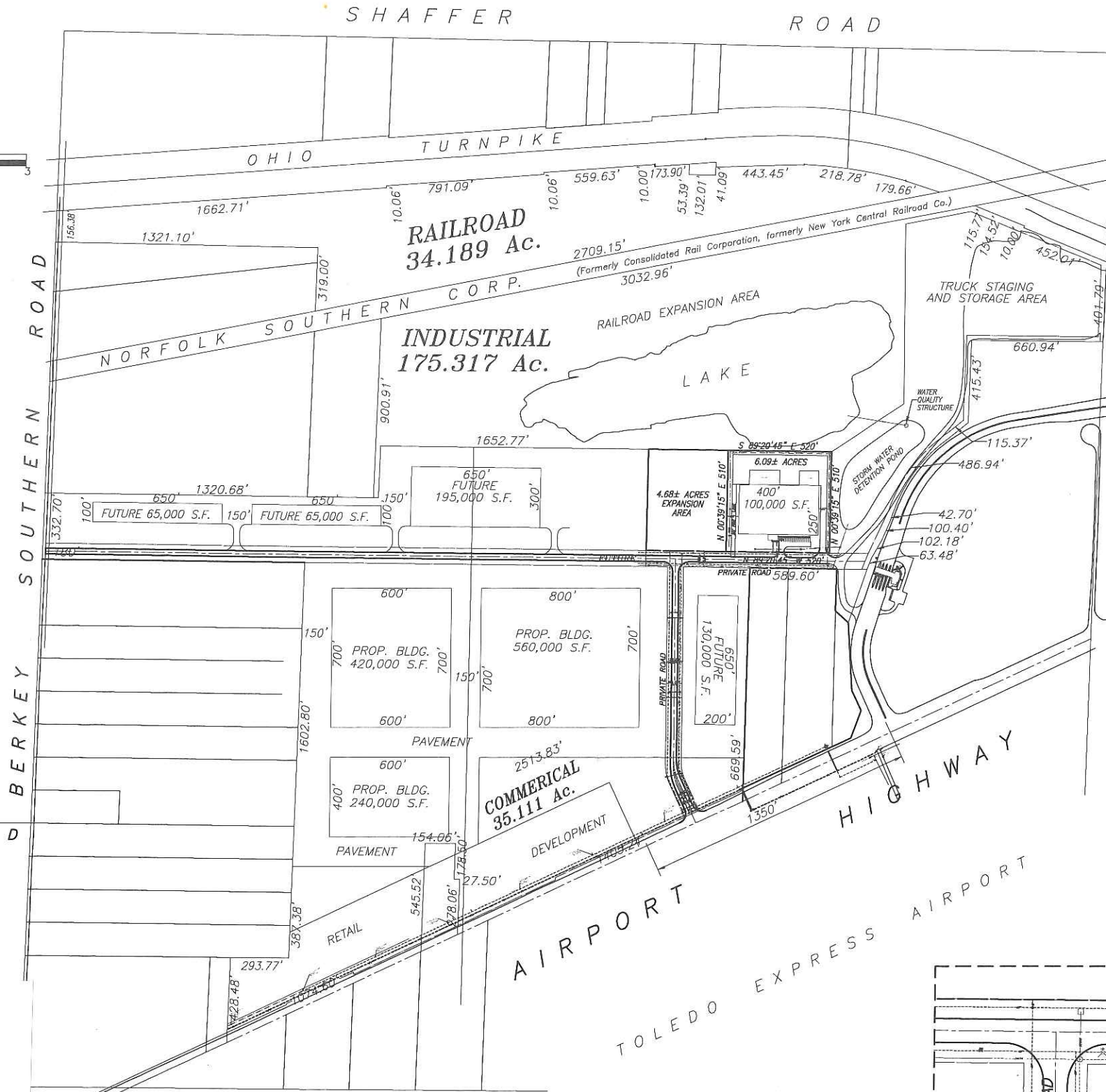
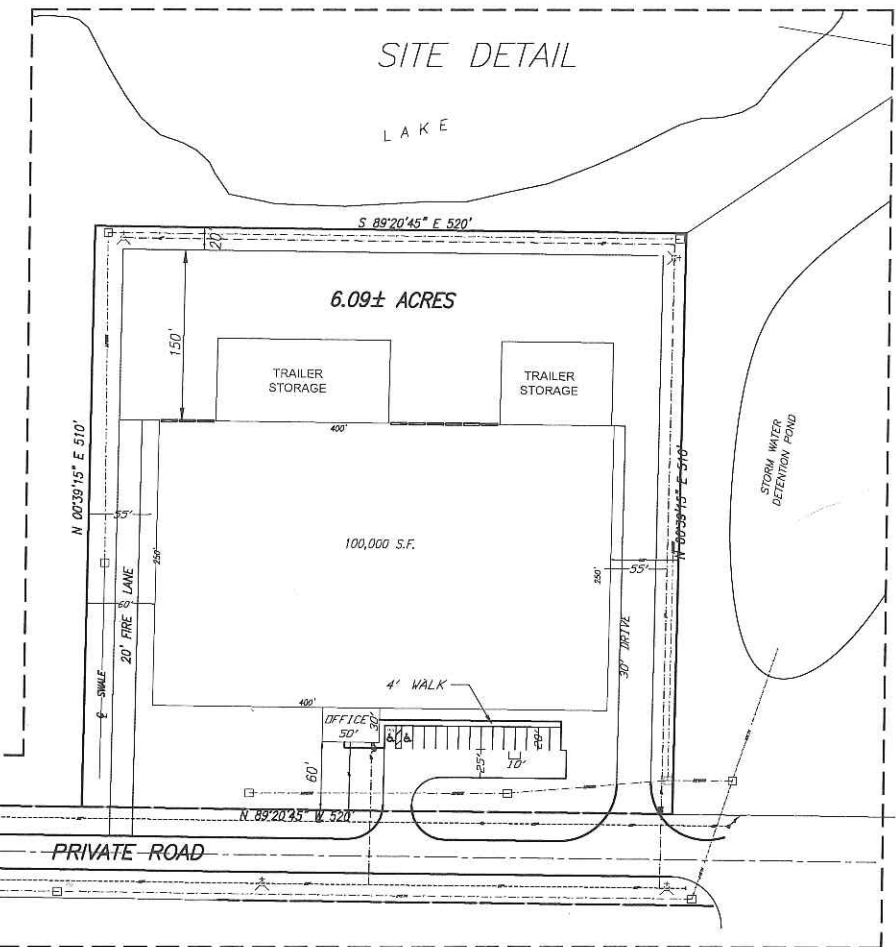
PORT LAWRENCE TITLE & TRUST COMPANY
 HAROLD & DELORES GARLING
 TEA ENTERPRISES
 GERKEN MATERIALS, INC.

LEGAL DESCRIPTION

PART OF SECTION 3, TOWN 7 NORTH, RANGE 9 EAST, SWANTON TOWNSHIP, LUCAS COUNTY, OHIO.

NOTE:

MANUFACTURING / WAREHOUSE BUILDINGS = 1,991,500 S.F.
 OFFICE

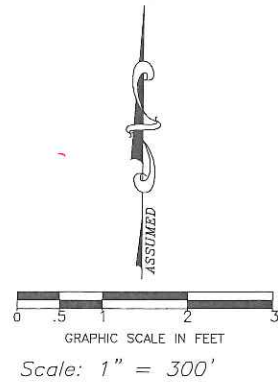


AREA OF SITE = 10.77 AC.
 AREA IN ROAD = 4.23 AC.
 AREA OF POTENTIAL DEVELOPMENT = 90 AC. ±



ORAVEC & ASSOCIATES, LLC
 5333 SECOR ROAD-SUITE TWO, TOLEDO, OHIO, 43623
 PH.(419) 474-6664 or 474-2405 FAX. PH. 474-5059.
 www.oraveczassociates.com
ENGINEERS & SURVEYORS

George V. Oravec	Reg. Sur. #5439			
SCALE	DATE	REVISED	DRAWING	ORDER NO.
1" = 300'	5/18/2012	9/6/2018	MLM	19580AA



INTERSTATE RAIL AIR GEOTHERMAL INDUSTRIAL PARK



DANBERRY NATIONAL LTD.

624 W. South Boundary
 Suite B
 Perrysburg, Ohio 43551